

EXTERIOR CLAD

WOOD PLYMER COMPOSITE

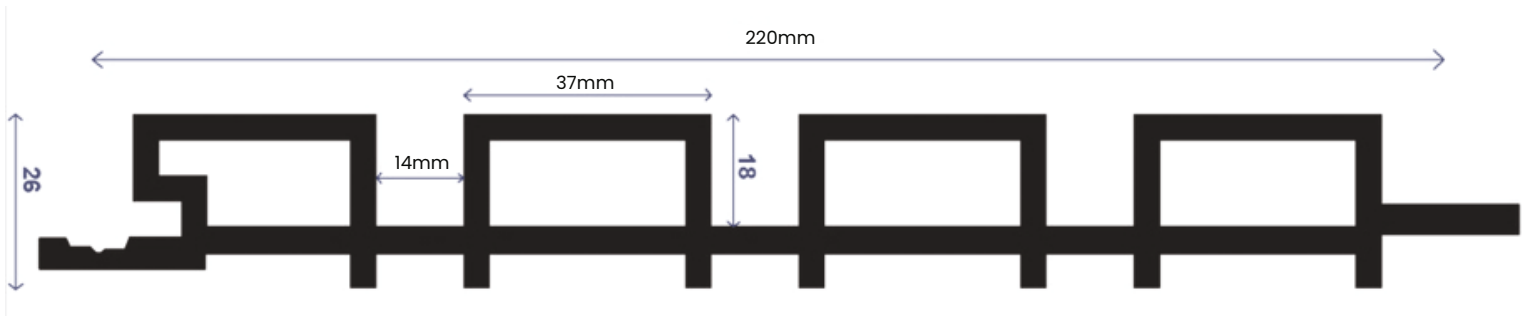
WPC FOR EXTERIOR SERVICES

FOR ALL WEATHER TYPES



Specifications & Features

- Core: Wood Plastic Composite (WPC)
- Finished: Co-extrusion WPC Layer
- Height: 9ft (2750mm)
- Width: 8.66 inches (220mm)
- Thickness: 26mm





ANTI MOULD

ANTI MOULD



100% TERMITE PROOF



ECO-FRIENDLY

ECO-FRIENDLY



PRE - FINISHED

PRE - FINISHED



FIRE RETARDANT



100% WATER PROOF

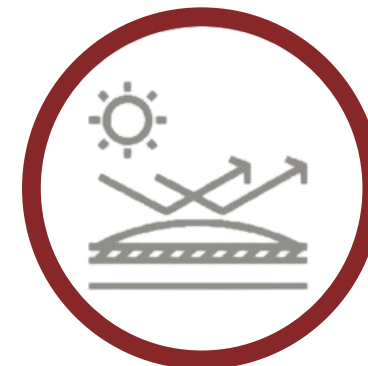


ANTI-WARP &
CRACK



INTERLOCKING

INTERLOCKING

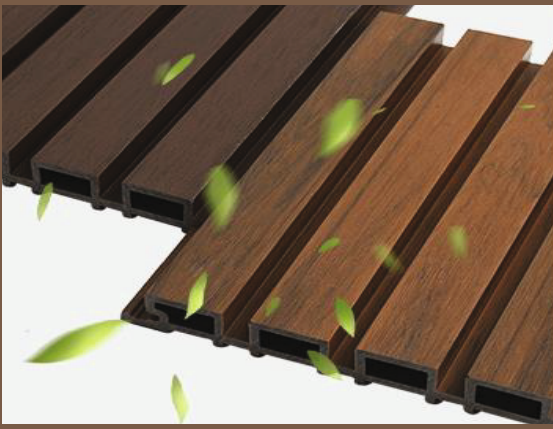


ANTI UV



100% WEATHER PROOF

ECO-FRIENDLY



ENVIRONMENTAL PROTECTION:

suitable for living environment,
no formaldehyde, environmental
protection, no harm to human body

FIRE PREVENTION

effective flame retardant,
self-extinguishing away from
the fire, no toxic gas.



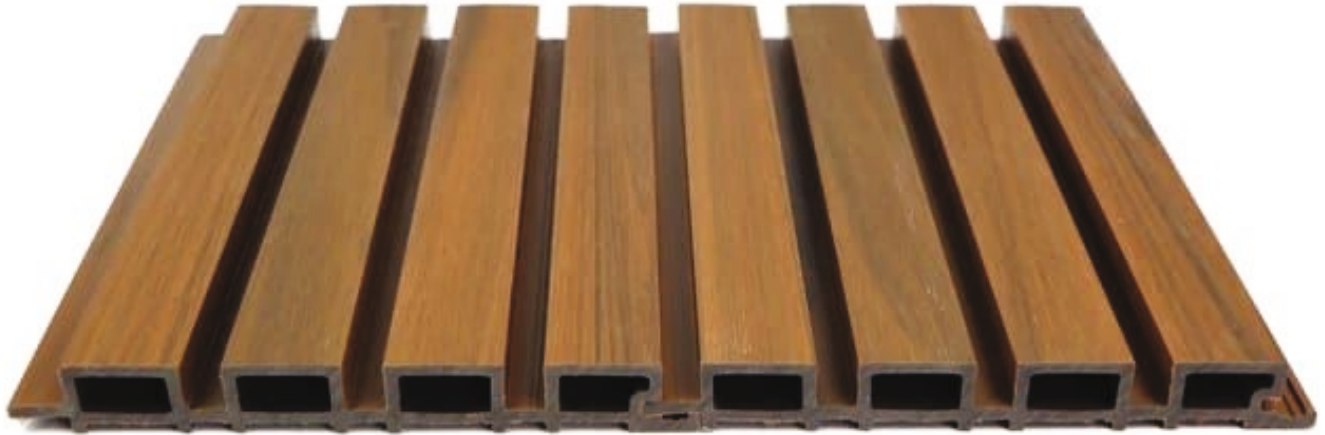
DURABLE

weather resistance, aging resistance,
not easy to fade, insect-resistant,
anti-bacterial good compression
resistance, impact resistance, etc.

COLOUR CODE- ICE TEAK/ MODEL-F4



PRODUCTS & SPECIFICATIONS



Colour-Ice Teak/ F4

Length : 2400mm, 2750mm, 2900mm

Width : 220mm

Thickness : 26mm

Inner Layer : Wood Plastic Composite

Outer Layer : Co-Extruded

COLOUR CODE – WALNUT/ MODEL –F4



PRODUCTS & SPECIFICATIONS



COLOUR NAME
Walnut/ Model-F4

COLOUR CODE-IPE/MODEL-F4

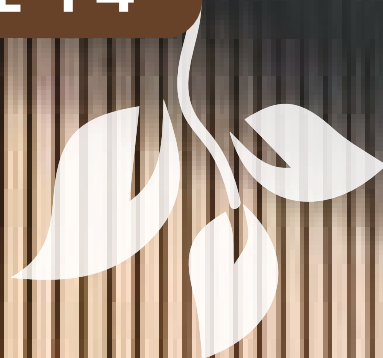


PRODUCTS & SPECIFICATIONS



COLOUR NAME
IPE / Model-F4

COLOUR CODE-TEAK/ MODEL-F4



PRODUCTS & SPECIFICATIONS



COLOUR NAME
TEAK/ Model-F4

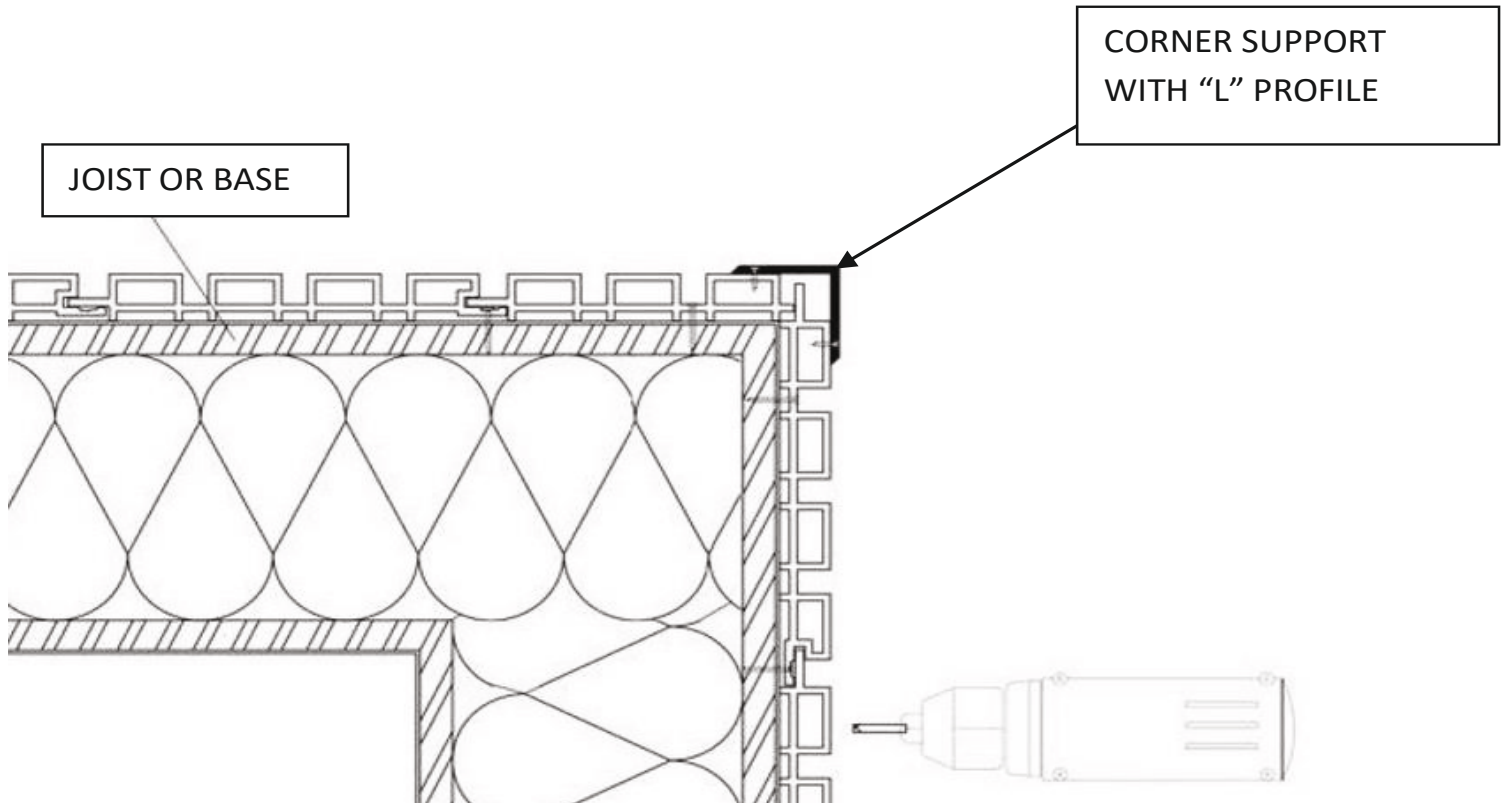
COLOUR CODE-D.GREY/ MODEL-F4



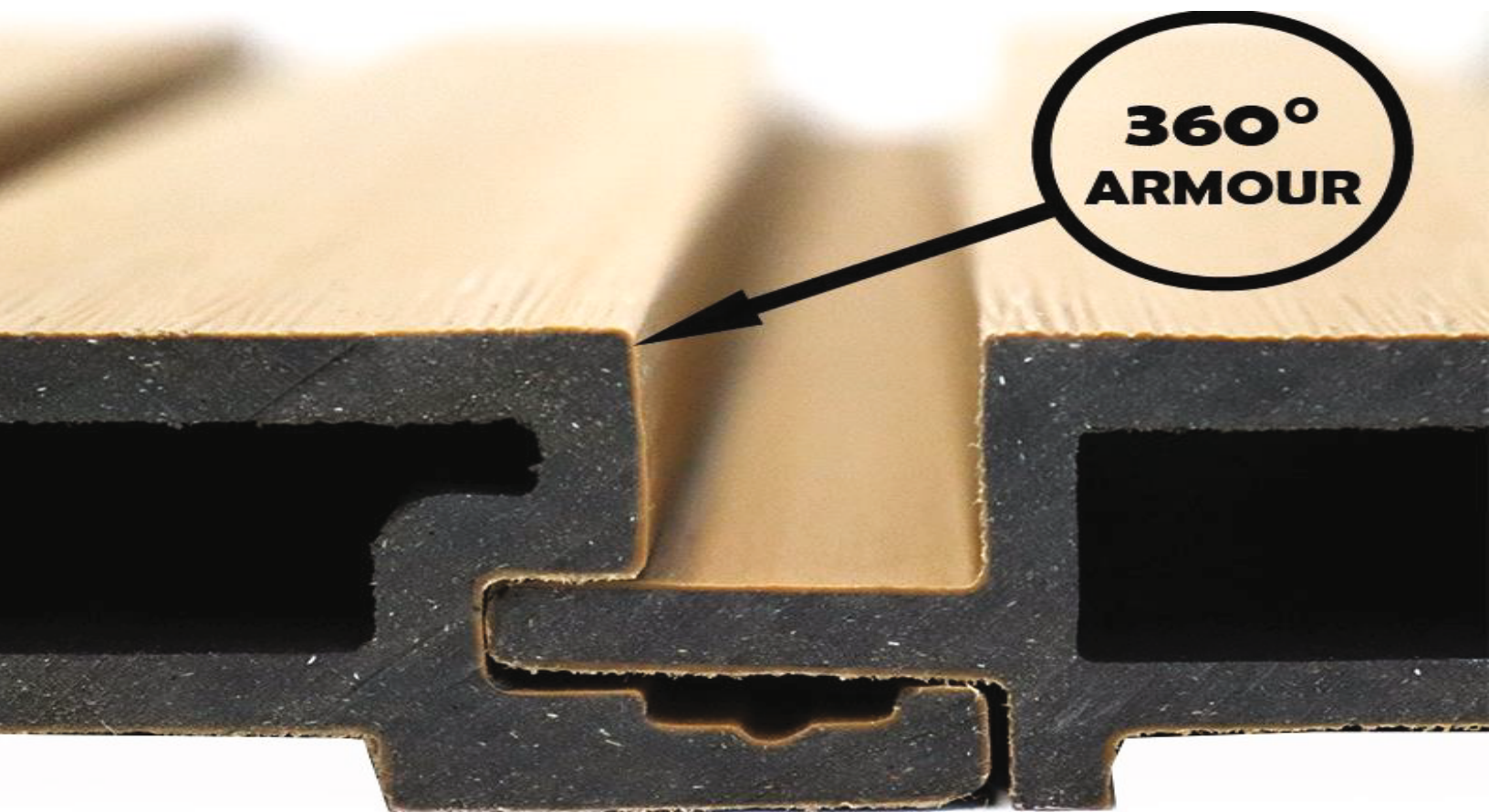
L PROFILE



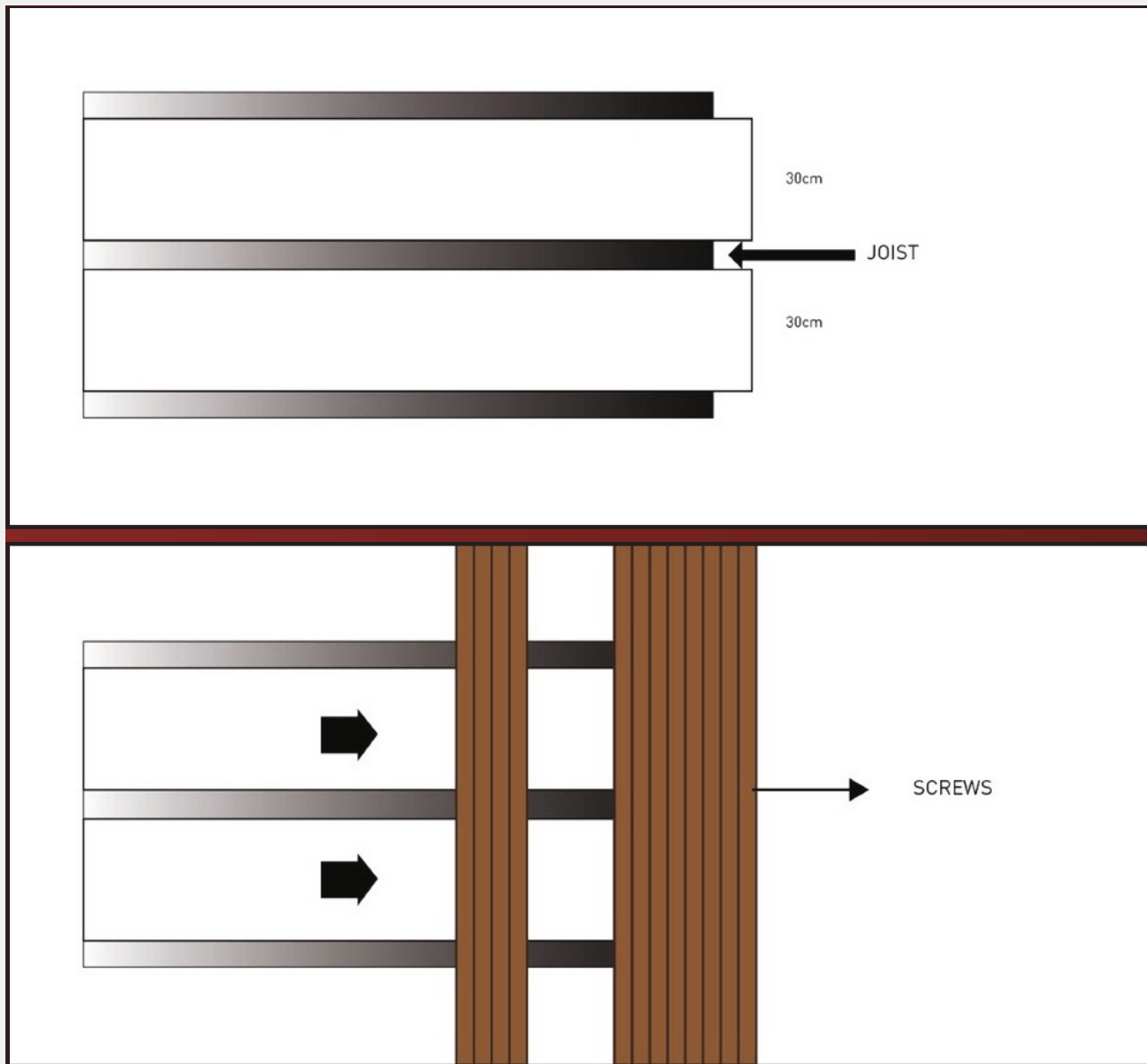
OPTION 1 "L" PROFILE AT CORNER



INSTALLATION PROCESS



INSTALLATION PROCESS



STEP 1: Panel the wall with the help of Joist, distance between the two joists / any other base should be 30cm - 35cm.

STEP 2: Start with fixing the first piece of panel -: Drill the stainless steel screws at every 2 feet distance on the lower side of this first panel

STEP 3: Overlap the upper side of the second panel on the first panel.

STEP 4: Again, drill the screws on the lower of the second panel at every 2 feet distance.

STEP 5: As we repeat this process you can see the screws are hidden and we get perfectly constant paneling